

Thank you for purchasing our product.  
Please read this User's Manual before  
using the product. Change without Notice

Combo DVR

---

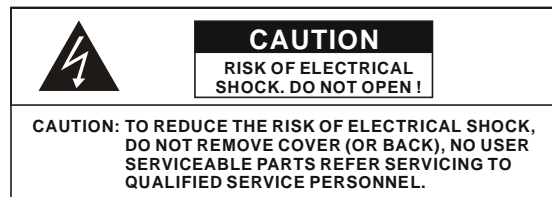
## **User's Manual**



User please operate according to the DVR model that you purchased



## Safety Precautions



The lightning flash with arrowhead symbol, within an equilateral triangle, is intended to alert the user to the presence of insulated dangerous Voltage within the product's enclosure that may be sufficient magnitude to constitute risk of electrical shock to persons.



The exclamation point within an equilateral triangle is intended to alert the user to the presence of important operation and maintenance (servicing) instructions in the literature accompanying the appliance.

**WARNING: TO PREVENT FIRE OR SHOCK HAZARD, DO NOT EXPOSE UNITS NOT SPECIFICALLY DESIGNED FOR**



Attention: installation should be performed by qualified service Personnel only in accordance with the National Electrical Code or applicable local codes.



Power Disconnect. Units with or without ON-OFF switches have power supplied to the unit whenever the power cord is inserted into the power source; however, the unit is operational only when the ON-OFF switch is the ON position. The power cord is the main power disconnect for all unites.

Warranty  
and Service

There are no serviceable parts for this unit, call for your agent for details.

## About this document

Before installing stand alone DVR, be sure to thoroughly review and follow the instructions in this Users Manual. Pay particular attention to the parts that are marked **NOTICE**.

Also, when connecting with external application, first turn the power OFF and follow manual instruction for appropriate installation.

## Before reading this document

1. This document is intended for both the administrator and users of stand alone DVR Model.
2. This manual contains information for configuring, managing and using stand alone DVR Model.
3. To prevent fire or electrical shock, do not expose the product to heat or moisture
4. Be sure to read this manual before using stand alone DVR Model.
5. For questions and technical assistance of this product, contact your local dealer.

### ► Strong recommendation on installation of the DVR unit

1. Check electricity at the place you want to install the DVR unit is stable and meets our electricity requirements. Unstable electricity will cause malfunction of the unit or give critical damage to the unit.
2. Several chips on the main board of the DVR unit and hard disk drive inside the unit generate heat, and it must be properly discharged. Do not put any objects just beside exhaust port(fan) on the left side of the unit and do not close up an opening (fresh air in-take) on the right side of the unit..

**FCC Statement:****WARNING**

This device complies with Part 15 FCC Rules. Operation is subject to the following two conditions: (1) This device may not cause harmful interference. (2) This device must accept any interference received including interference that may cause undesired operation."

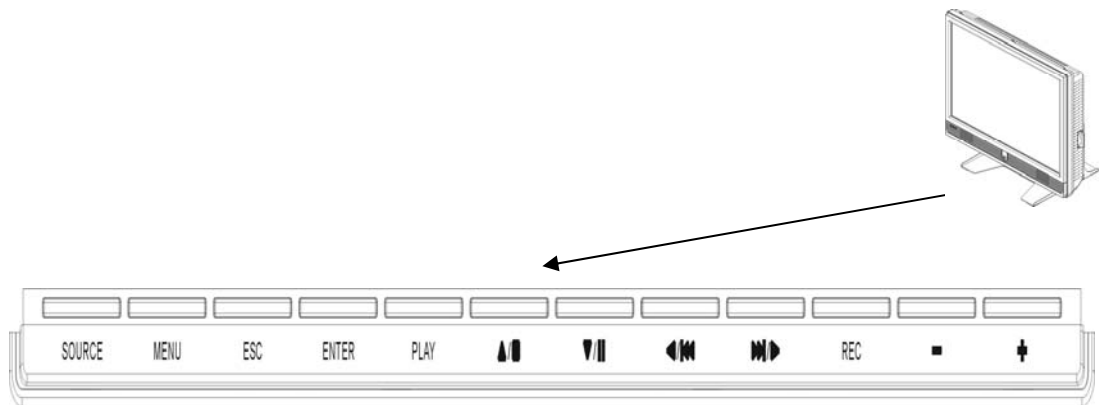
**\* Federal Communications Commission (FCC) Statement****WARNING**

This Equipment has been tested and found to comply with the limits for a Class B digital device, pursuant to Part 15 of the FCC rules. These limits are designed to provide reasonable protection against harmful interference in a residential installation. This equipment generates, uses and can radiate radio frequency energy and, if not installed and used in accordance with the instructions, may cause harmful interference to radio communications. However, there is no guarantee that interference will not occur in a particular installation. If this equipment does cause harmful interference to radio or television reception, which can be determined by turning the equipment off and on, the user is encouraged to try to correct the interference by one or more of the following measures:

- Reorient or relocate the receiving antenna.
- Increase the separation between the equipment and receiver.
- Connect the equipment into an outlet on a circuit different from that to which the receiver is connected.
- Consult the dealer or an experienced radio/TV technician for help.

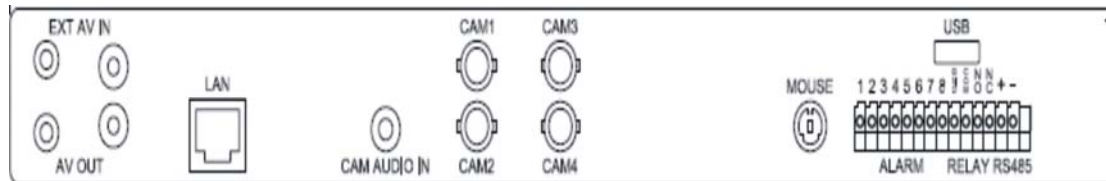
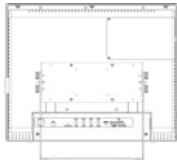
\* You are cautioned that changes or modifications not expressly approved by the party responsible for compliance could void your authority to operate the equipment.

## FRONT PANEL

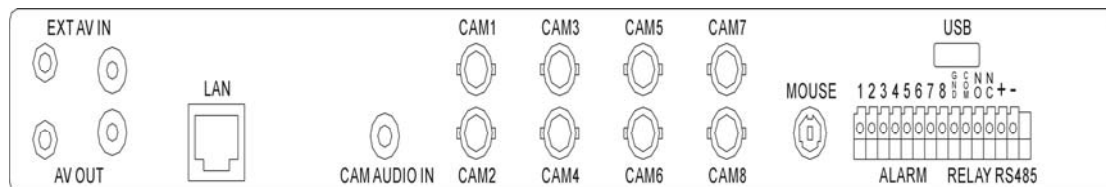


- |                        |   |
|------------------------|---|
| 1. <b>SOURCE</b>       | : DVR and AV mode select                                    |
| 2. <b>MENU</b>         | : OSD setup   |
| 3. <b>ESC</b>          | : OSD exit  |
| 4. <b>ENTER</b>        | : Menu enter / Channel select                               |
| 5. <b>PLAY</b>         | : Playback mode   |
| 6. <b>UP / STOP</b>    | : Direction button UP / Playback stop button ▲ / ■          |
| 7. <b>DOWN / PAUSE</b> | : Direction button down / Playback pause ▼ / ■■ (Step play) |
| 8. <b>REW</b>          | : Reverse playback choose button / play speed ◀ / ◀◀        |
| 9. <b>FF</b>           | : Forward playback choose button / play speed ▶ / ▶▶        |
| 10. <b>REC</b>         | : Record mode button  |
| 11. <b>-</b>           | : Reduce - values change                                    |
| 12. <b>+</b>           | : Increase + values change                                  |

## REAR PANEL



( 1 ~ 4 Channel )



( 1 ~ 8 Channel )

Connector	Define	
EXT AV IN	External video in	RCA type
AV OUT	External video out	RCA type
LAN	Network connection	RJ-45 type
CAM AUDIO IN	Audio input	RCA and Earphone type
CAM 1 ~ CAM 4(8)	Camera connection	BNC type
MOUSE	Mouse connector	PS2 type
USB	USB device connector	USB 2.0 type
	Alarm / Relay RS 485 +/- connector	

## DVR

### Live mode



### Playback mode



### Indicator:

#### Live:



Live mode



Video loss



Recording



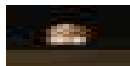
Overwrite



Motion



Alarm



Relay (Motion / Alarm)



Channel sequence



Keypad lock \* 111111 is the default password

### Playback:



Forward



Reverse



Pause

## Mouse Control



① Screen display	<ol style="list-style-type: none"> <li>1. Double-click of the left button on desired camera to full channel</li> <li>2. Double-click of the left button on desired camera to quad screen</li> </ol>
③ Menu display	<ol style="list-style-type: none"> <li>1. One-click of the right button to menu OSD</li> <li>2. Back to last OSD page</li> </ol>
② None	No function
① Select	<ol style="list-style-type: none"> <li>1. One-click on the item of OSD</li> <li>2. One-click on the value of item</li> <li>3. One-click on the Exit to quit and save menu</li> <li>4. From right-up to left-below and the set motion detect area</li> </ol>

## Remote controller:

The key on the remote controller function control is same as the front keypad of the unit.

User please operate according to the DVR model that you purchased





## Main MENU – Camera Set



Right adjustment of each element will increase picture quarterly displayed. We recommend you to adjust each element of cameras and monitor to be connected to the DVR unit.

## Main MENU – Camera Set – Display: Channel mask on or off

## Main MENU – Camera Set – Title

Camera title setup function allows 5 characters for each channel.



Select Shift to next page and then Enter to confirm camera title.



## Main Menu – Record Set



## Record Set – Schedule Record Frame rate



## Record Set – Motion Record Frame rate



## Record Set – Alarm Record Frame rate



**Record Set – Record Quality:** High / Normal / Low

**Record Set – Event Rec Duration:** 5 / 10 / 15 / 20 / 25 / 30


**Record Set – Auto Record:** After 1 ~ 8 minutes, auto start to record if no operation.

**Record Set - Data Retention Set:** 1 ~ 15 days

## Record Set – Schedule Record



**Notice:**

1. Each channel has own frame rate adjustment of each recording mode.
2. In 24 hours, user can adjust each channel frame rate of different record mode. Such as schedule, motion detection, and alarm record more.
3. Press  button to change different of record modes.

Schedule record mode



Motion record mode



Alarm record mode



Schedule, motion, and alarm record mode



**Record Time Table: 80GB HD**

**Record Quality:** Low. Average: 5 KB;

<b>REC FPS</b>	<b>60</b>	<b>30</b>	<b>15</b>	<b>10</b>
REC Hour	72	148	296	444

**Record Quality:** Normal. Average 10 KB;

<b>REC FPS</b>	<b>60</b>	<b>30</b>	<b>15</b>	<b>10</b>
REC Hour	36	74	148	222

**Record Quality:** High. Average 20 KB;

<b>REC FPS</b>	<b>60</b>	<b>30</b>	<b>15</b>	<b>10</b>
REC Hour	18	37	74	111

Actual recording time is base on live environment. This table is only for reference.

$20 \text{ K} \times 30 \text{ (frame rate)} \times 60 \text{ (mins)} \times 60 \text{ (secs)} = 2160000 \text{ K} = 2160 \text{ M / hr}$

$2160 \text{ M / hr} \times 24 = 51840000 \text{ K} = 51840 \text{ M} = 51.84 \text{ G / (1 Day)}$

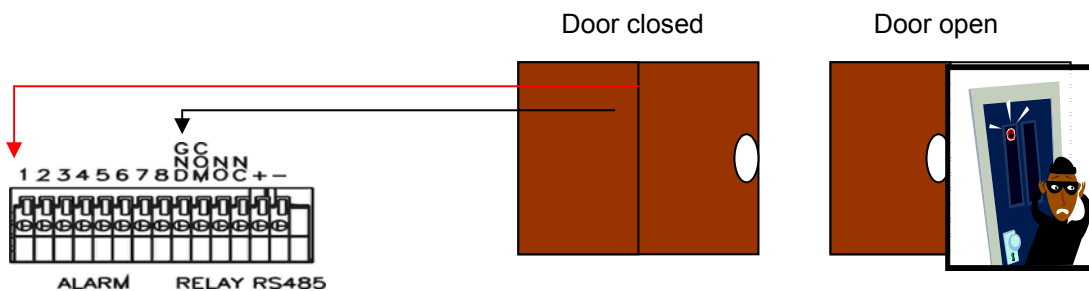
**Please format hard disk before starting recording after all the HDD installation**

<b>IDE</b>	<b>Seagate</b>	<b>Hitachi</b>	<b>WD(AAJB)</b>		
<b>Status</b>	80 ~ 750 GB OK	80 ~ 750 GB OK	80 ~ 750 GB OK		

## Main Menu – Alarm Detection



Alarm Signal type depends on Alarm Sensor polarity define on NO (N/Open) or NC (N/Close) mode. Alarm POP UP: Event channel jumps to full screen when alarm triggered. Quad screen with the alarm symbol if more than two cameras triggered.

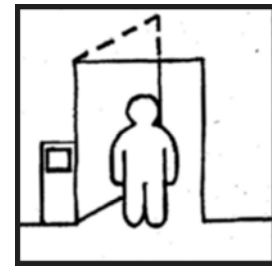
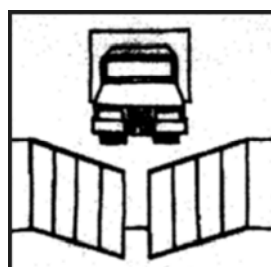
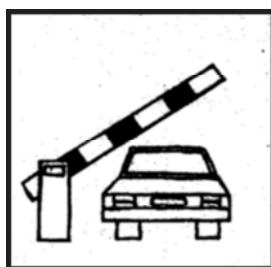


Relay: NO + COM or NC + COM

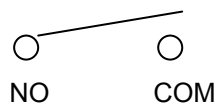
Alarm Signal type depends on Alarm Sensor polarity define on NO (N/Open) or NC (N/Close) mode.

NO + COM: Normally, motion relay is NO + COM connector.

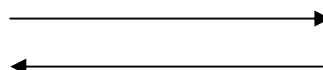
### Relay action:



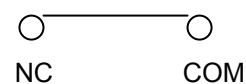
Relay: NO (Normal open)



Alarm trigger



Relay: NC (Normal Close)

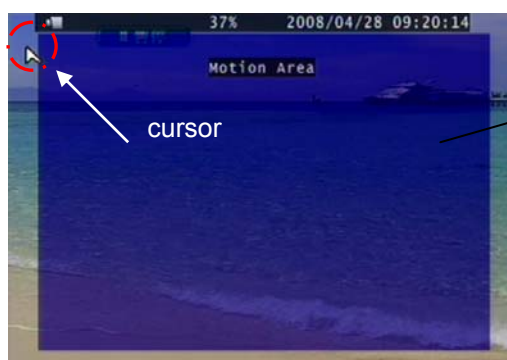




## Main Menu – Motion Detection



## Main Menu – Motion Detection – Motion Area



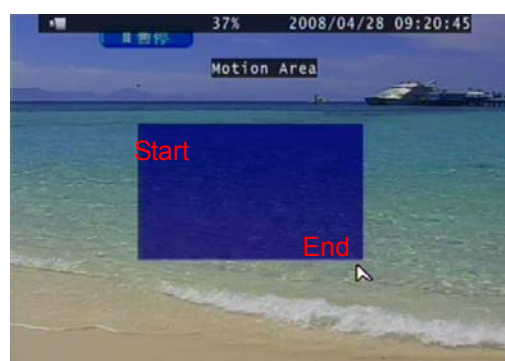
Detected area

Alarm POP UP: Alarm channel jumps to full screen when motion triggered. Quad screen with the alarm symbol if more than two cameras triggered.

## Main Menu – Motion Detection – Motion area selection

Direction button Left or Right + ENTER to cancel detection area.

Select start (right-up corner) point and end (left-below corner) point of detect area.



One-click of the mouse left button to cancel detect area.

Select start (right-up corner) point and end (left-below corner) point of detect area.

## Main Menu – Video Setup



## Video Adjustment



## Main Menu – Audio Set



- If microphone, audio line in or any how, user please set the audio record mode to on and also adjust volume input or output to right sound effects.
- Mute means live audio is turn on or quiet.
- Please format hard disk before starting recording after all the HDD installation

## Main Menu – System Set – Hard Disk



## Main Menu – System Set – Format HDD



## Main Menu – System Set – Hard Disk Setup – Format HDD – Password



HDD was formatted successful.



- Before hard disk format, user needs to put the right password. The password is same as unlock which is default 111111.
- Please set HDD to Master if only one installed. Second one to Slave.
- Hard Disk Master and Slave jumper pin must right, otherwise it makes DVR work fault.
- Please format hard disk before starting recording after all the HDD installation

## Main Menu – System Set – Security Protection - Password Change





### Menu Protection:

On / Off. User needs to login password before enter to menu.

### Auto Key Lock:

After 1 ~ 60 seconds system automatically key lock which means before operate DVR user needs to unlock.

### Main Menu – System Set – Time Set



Select time zone and auto time synchronization with NTP server. Network is required on NTP server. NTP server does not work under network DHCP mode. After time set or daylight mode turns to on, user needs to Apply and confirm. 0 ~ 9 is repeatable with increase + button, And decrease - button is opposite. If the DVR is under a network system, suggest enable **NTP server** to get a network request automatically.

**Data Format:** YYYY / MM / DD; MM / DD / YYYY; DD / MM / YYYY

### Main Menu – System Set – Dwell Time Setup (Channel auto sequence)



## Main Menu – System Set – BUZZER SETUP



## Main Menu – System Set – Network Settings      Network Settings – Local IP



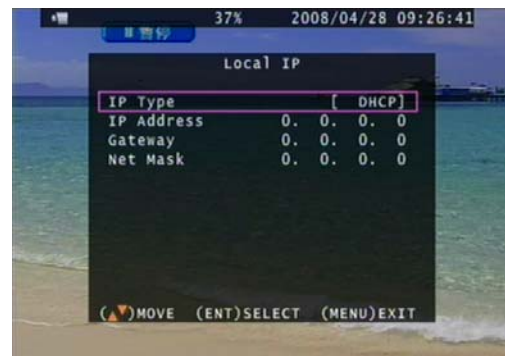
## Network Settings – Local IP – STATIC

Select static IP address / Gateway / Net Mask



## Network Settings – Local IP – DHCP

Auto IP detected under IP sharing or router



## Main Menu – System Set – Network – PPPOE



## Main Menu – System Set – Network – PPPOE ID



If the DVR is under a network system, suggest enable **Main Menu – System Set – Time Set NTP server** to get a network request automatically.

## Main Menu – System Set – Network – PPPOE – Password



Input PPPoE account and password. And then save & exit menu. After a while, back to network set again, user would see IP appears.

IP would not correctly appear on screen if any firewall or router authority management.

User type the IP to Net viewer or IE browser to view image via network.

## Main Menu – System Set – Network – D/DNS set

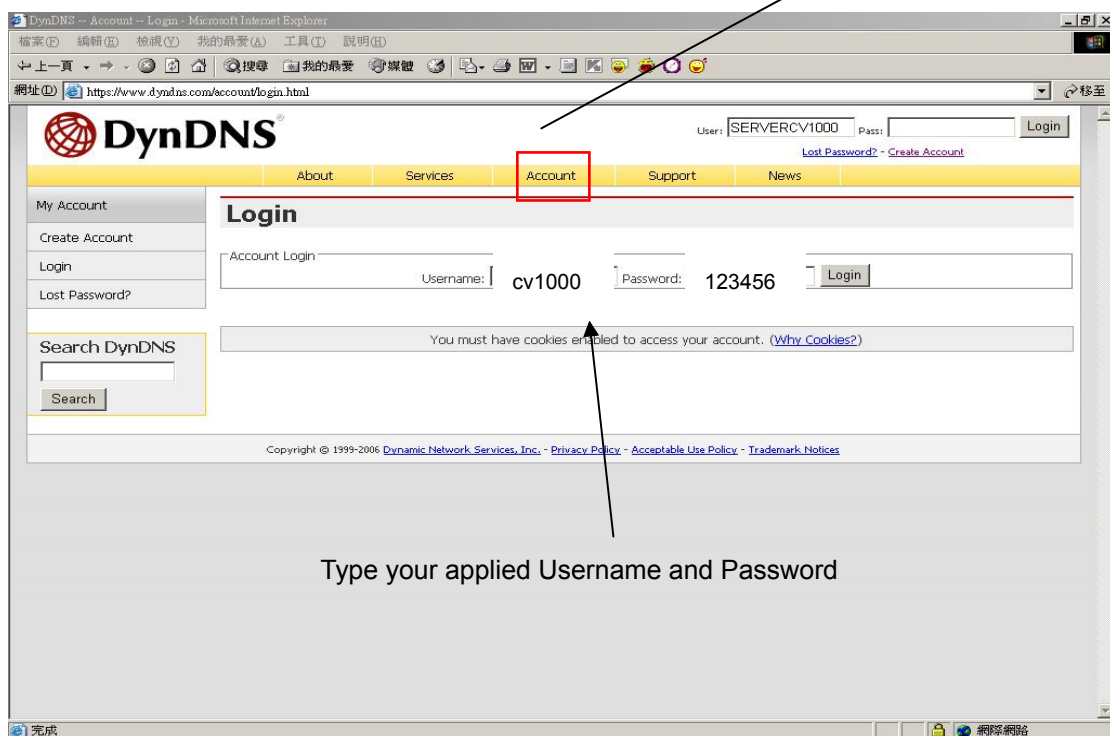


Ex: Enter in [www.dyndns.com](http://www.dyndns.com) to apply a free account and host name.

Click Create Account to make a new ID name.

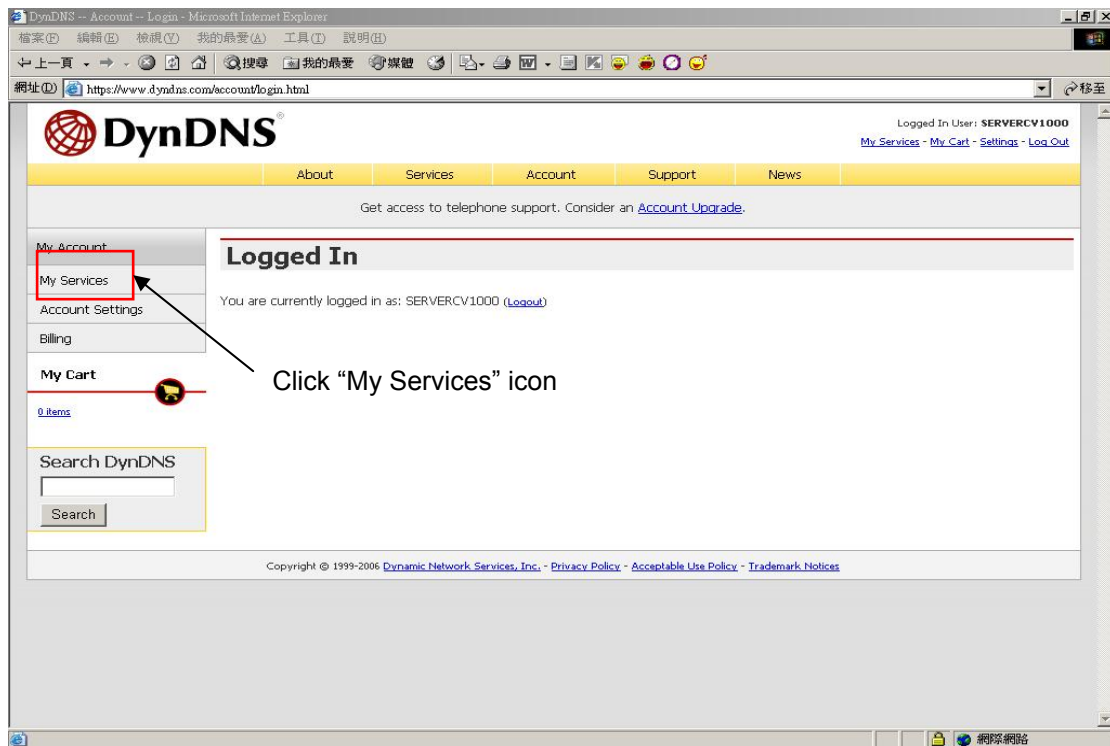


Fill in all the personal information, password, email requested; please go to user's email account to active your new account. Return to DynDNS website; click Account to long in page.

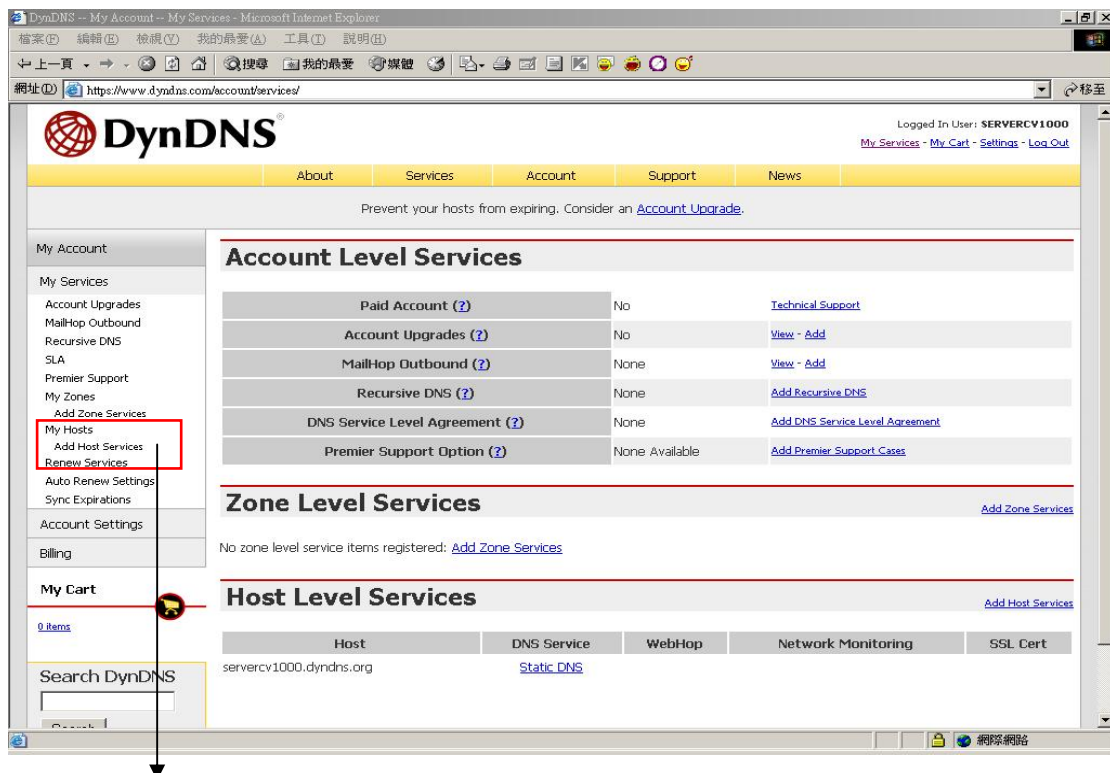




## Logged In page



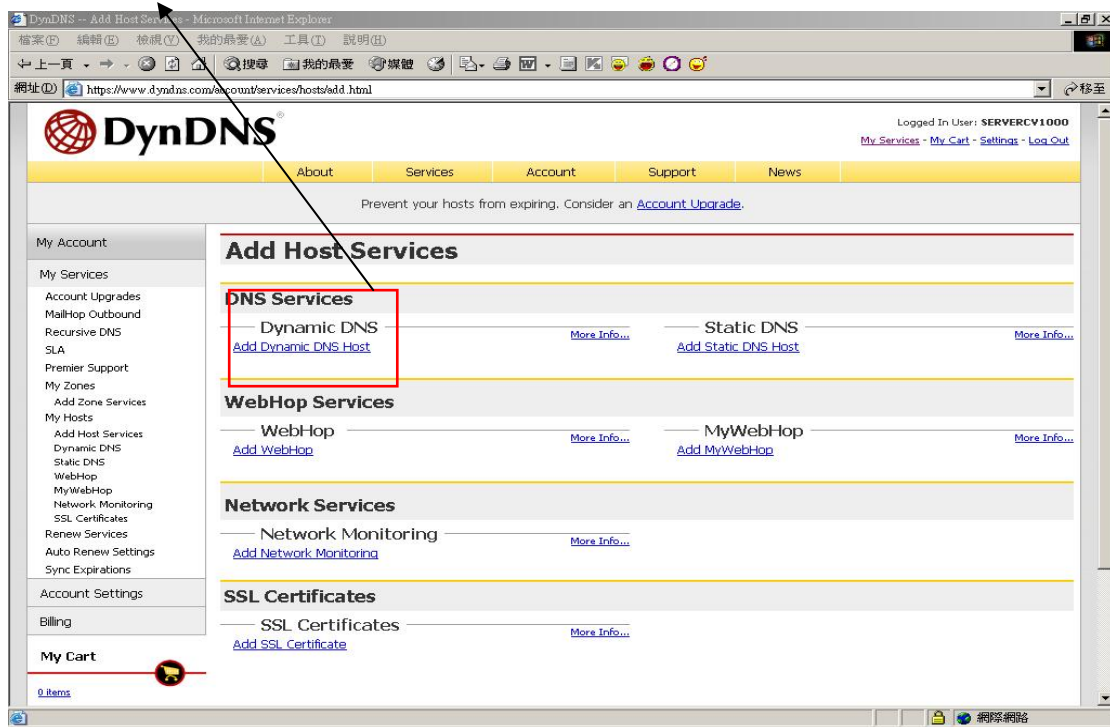
## Click Add Host Services:



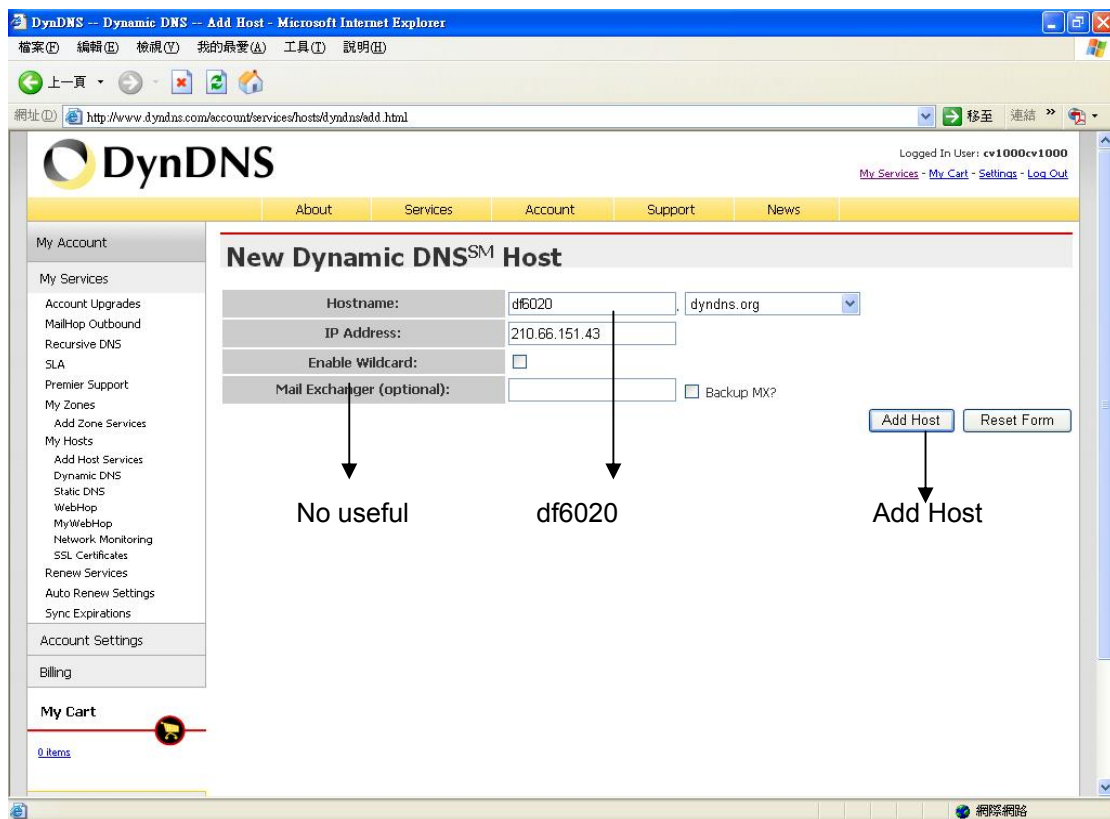
## Click "Add Host Service"

Add static DNS Host:

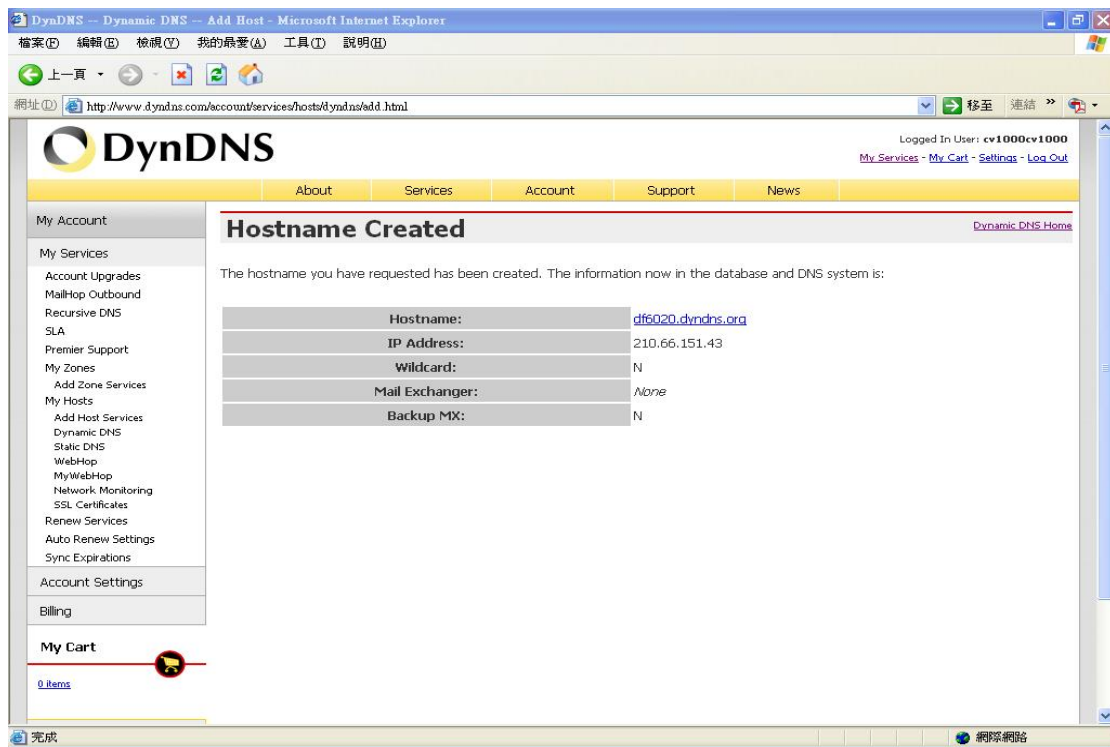
Select Static DNS: add Static DNS Host



Type a Hostname user decided.



Ex: Create a new df6020 host name, after add a new host name; DynDNS page shows a confirm message page.



Enable : YES  
 DNS Server: From ISP  
 DDNS Server: DynDNS.  
 HOST Name: Insert host name  
 User Name: Insert DynDNS username  
 Password: Insert DynDNS password

On IE browser blank bar, type df6020.dyndns.org; and then user can get on line.  
 DNS address is required. (Please ask local ISP). DNS only works under DDNS mode.  
 Network stream speed depends on the locality bandwidth.  
 Advice user apply network speed Upload 512K / Download 512K or more, to avoid image data too big influence the remote quality.

## Main Menu – System Set – RS-485



## Main Menu – System Set – Pan/Tilt Device



Control: Keypad, mouse

\* Mouse control: press ESC to PTZ mode, press AUTO button, and then once-click left button of mouse to control PTZ movement.

Press quad button + number 1 ~ 4 (1 ~ 8) button to set presets, press AUDIO + 1 ~ 4 (1 ~ 8) to call preset. Press AUTO to start auto presets, AUTO again to cancel.

**The AUTO command is 76 + Preset. The command would be different if connect to others PTZ dome. It is normal if no any action after press AUTO.**



## Main Menu – System Set – F/W Upgrade

Stop all hard disk working before update, select F/W upgrade and then press ENTER to search firmware.



Press PLAY to start version update.



DVR auto reboot after version update.



## Main Menu – System Set – Load Active-X Control

Stop all hard disk working before load Active-X control

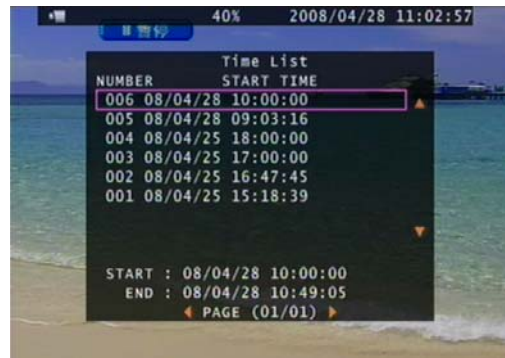


1. Before DVR IE connection, please download the ActiveX to DVR hard disk from CD-ROM, and then you can view DVR image via internet any PC.  
Steps: CD disk → ActiveX → USB pan drive → DVR (with hard disk) USB → Menu - System Set – Load Active-X Control → ENTER button
2. Also install ActiveX to your personal computer. Net viewer is packaged with ActiveX.exe.

### Main Menu – Search



### Main Menu – Search – TIME LIST



### Main Menu – Search – Event List



### Main Menu – Search – Time Search

Press ENTER to select data and time. Direction left and right button to move value item.  
ENTER or + / - button to change value.



**Main Menu – Search – Time Search:** After data and time select, go to Search and then press ENTER to start playback.



Playing



Forward speed: x 2 / x 3 / x 4 (Direction right button)

Reverse speed: x 8 / x 16 / x 32 (Direction left button)

Press STOP to search list, press ESC to live mode.

**Backup mode:** Before backup, USB pan driver is required. Back up file size can not exceed 1GB, when system reads USB (thumb driver only) device, the system will stop recording about 2 seconds

**Mode 1:** On live mode, press backup button to file backup page.



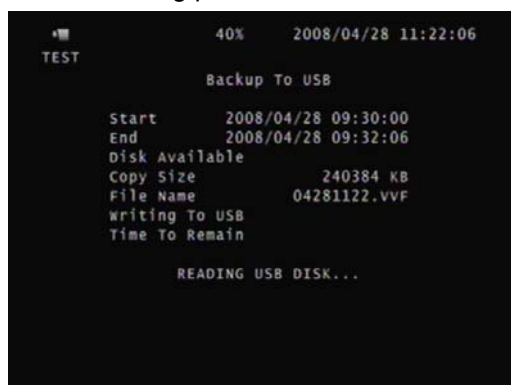
Total hard disk data time range

Select start and end time of backup



After select backup time, apply to count data size. After size appears, press backup button to USB page.

DVR is reading pan driver

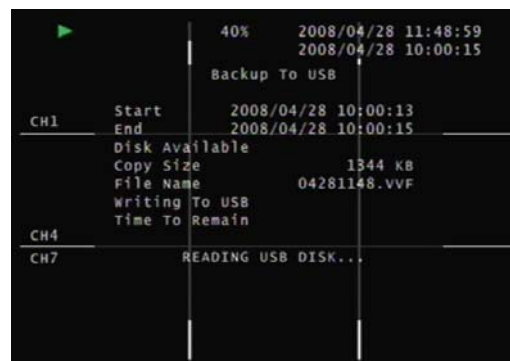




After a while, all backup information display on screen, user now can press backup button to start file backup. Data is writing to USB pan drive, users please wait until backup complete. Press menu button to quit USB page.



**Mode 2:** Press play button to start playback, the playback beginning time is the last one hour record. Press + and – to select backup time. User only can increase seconds in this backup way. Press backup button to USB page which is same as mode 1.



**Mode 3:** On event list, choose an event record data, and then press backup button.

Pages go to USB page, after data size appears, press backup button to the page which is same as mode 1





### USB compatible(Max. 4G)

ADATA / Transcend / San Disk / Kingston

### Main Menu – Language – English or Chinese



### Main Menu – Exit



User needs to save changes if any function value has changed. And then exit menu.

## Net viewer



### Viewer function:

1. Backup file player
2. Network viewer
3. Connection

### DVR control via viewer:\*

4. DVR screen: Quad, Camera 1 ~ 4 (Camera 1~8) full screen / Key lock / Channel auto sequence. Audio ON : stream speed – not good. OFF : stream speed – good
5. DVR function: MENU / ESC / Play / REC / T-SRH / - values change / + values change
6. DVR direction button: Up (Item select, Play Stop) / Down (Item select, Play Pause)  
Left (Item select, Play Reverse) / Right (Item select, Play Forward)  
SEL (ENTER): Item confirm/select, values change
7. Audio volume (PC site)

\*Viewer control panel button is same as DVR keypad.

\*Viewer and DVR display is synchronously.

\*PTZ control is supported on viewer and control way is same as DVR keypad.

\*PTZ control and movement speed depends on network streaming.

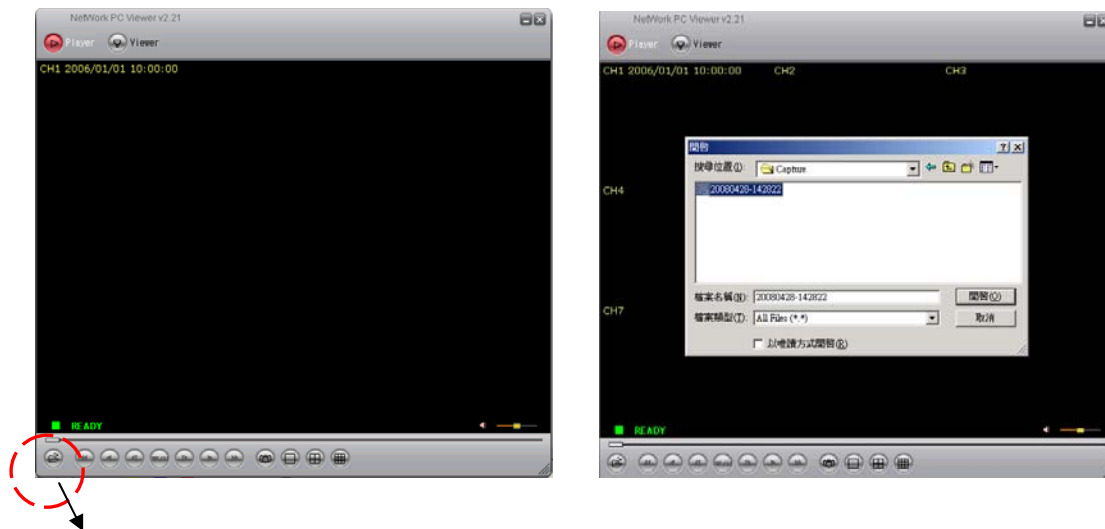


## Net Viewer configures:

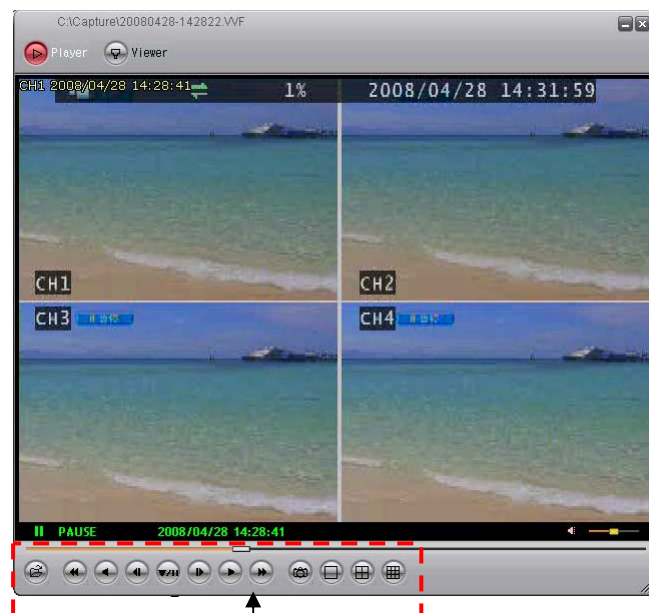


Player	Switch to backup file play mode
NetViewer	Switch to DVR network viewer
Disconnect	Network log out and connect canceled
Audio	Audio volume adjust (PC site)
Local Recording	Viewing image record
Always On Top	Player or viewer always on top even other data folders open
Full Screen	Viewer change to full screen
Maximize	Full screen display
Aspect Ratio	Resolution 640 x 448 / 640 x 544 adjust
Options	Viewer function setup
	Always on Top: Player or viewer always on top even other data folders open
	Auto Reconnection: Reconnection if non artificial network disconnect.
	Path for local recording: Please select a path of your PC.
Exit	Close viewer

## File Player:



Click browser to open file which you saved

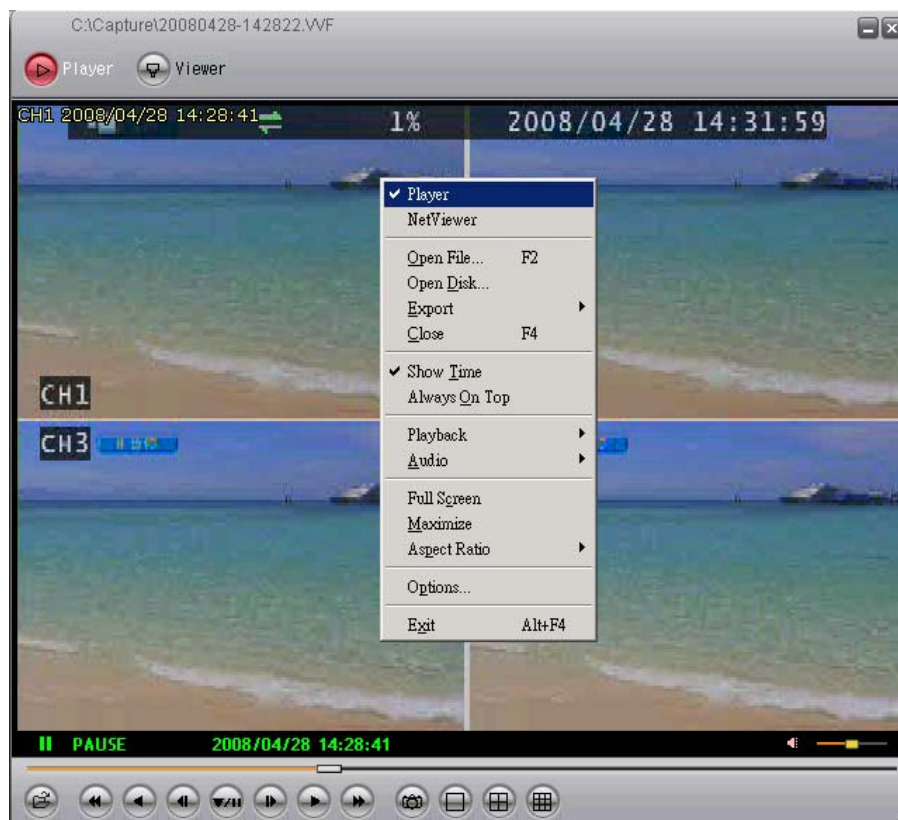


**Player button**

Open \ Fast Backward \ Play Reverse \ Previous Frame \ Pause \ Next Frame \ Play \ Fast Forward \ Still Capture \ Split1 \ Split 4 \ Split 9

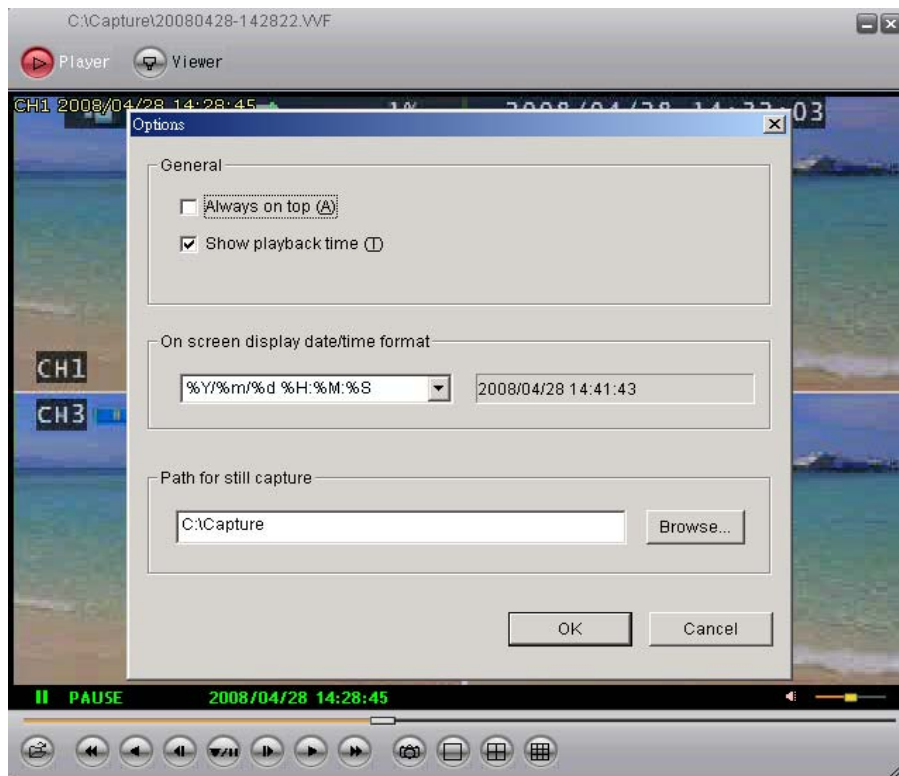
1. DVR USB or net viewer backup file (\*.VVF) only read in player
2. Local recording file only read in player, except transfer to AVI.
3. Backup file includes video and audio

## Player Configure:



Player	Switch to backup file play mode
Netviewer	Switch to DVR network viewer
Open File	Open the backup file which saved in any path
Open Disk	Open the DVR hard disk which is installed to PC IDE slot
Export	Backup file to AVI files transform (Video + Audio). See AVI page
Close	Player Button control disable
Show time	Show the backup beginning time
Always on Top	Player always on top even other data folders opened
Playback	Play back mode and speed select. Same as Player button
Audio	Audio volume adjust (PC site)
Full screen	Player screen to full size
Maximize	Player to full of screen
Aspect Ratio	Player resolution adjust
Options	See Next page
Exit	Player and viewer exit

## Options



Always on top: Player always on top even other data folders opened

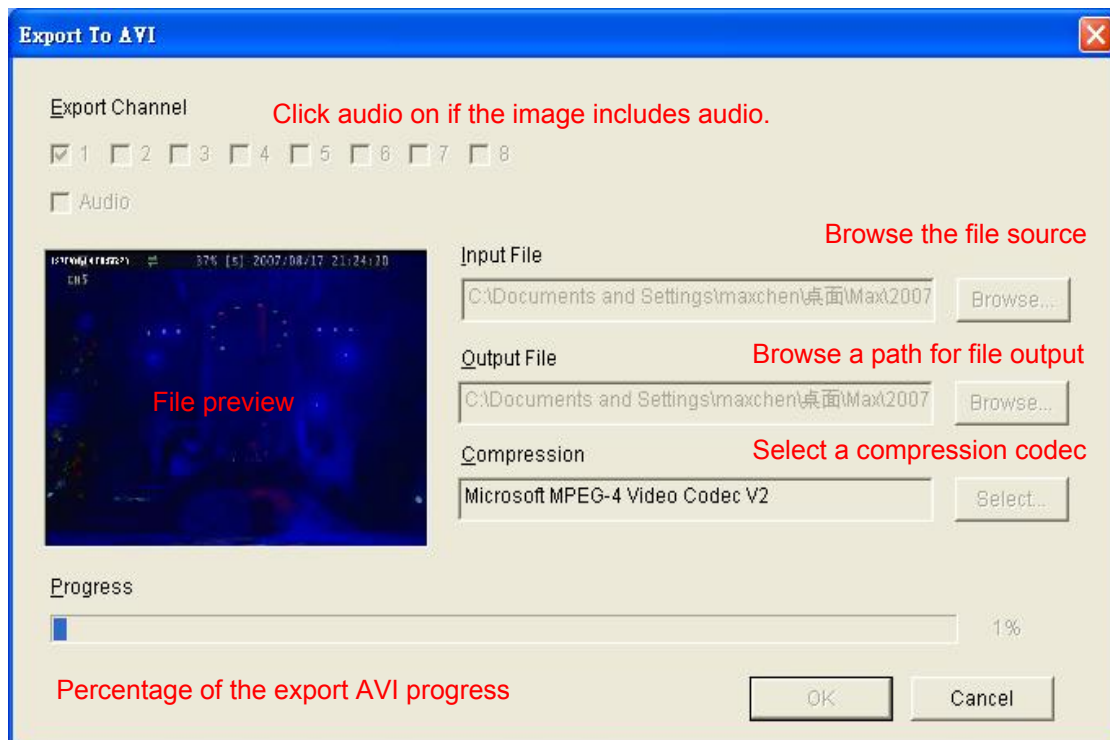
Show time: Show the PC time of when user start recording backup file



On Screen display date/time (Show time) format: Please select the date format you want.

%Y/%m/%d %H:%M:%S:	2008/04/28 15:32:29
%y/%m/%d %H:%M:%S:	08/04/28 15:32:29
%Y/%m/%d %p %l:%M:%S:	2008/04/28 PM 03:32:29
%y/%m/%d %p %l:%M:%S:	08/04/28 PM 03:32:29
%b %d %H:%M:%S %Y:	Apr 28 15:32:29 2008
%b %d %p %l:%M:%S %Y:	Apr 28 PM 03:32:29 2008

## VVF file export to AVI



Users please wait until file export completed.

## PTZ Control mode



(1~8 Channel)



(1~4 Channel)

Channel / Direction

Near / Far, Call OSD,  
Menu confirm

Select camera channel

Set presets

Zoom -- / + : Lens, Near / Far

Menu: Call PTZ OSD

Enter: OSD value confirm

Channel: Select PTZ channel

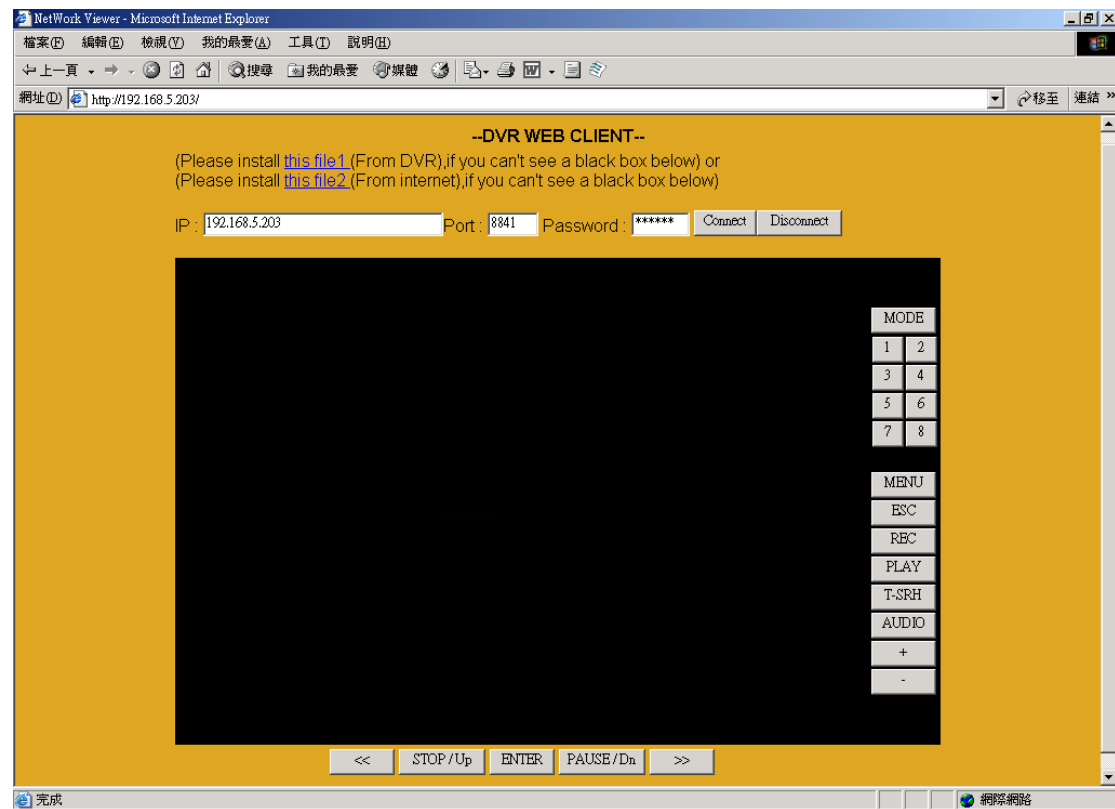
Preset: Preset setup

Select preset 1 ~ 4 (Preset 1~8), and then click SET to save. Click CALL to run preset.

Click AUTO to start all presets. Click STOP to terminate.

CLEAR, delete preset 1 ~ 4 (Preset 1~8)

IE browser:



IE control button is same as DVR keypad.

1. Before DVR IE connection, please download the ActiveX to DVR hard disk from CD-ROM, and then you can view DVR image via internet any PC.

Steps: CD disk → ActiveX → USB pan drive → DVR (with hard disk) USB →  
Menu - System Set – Load Active-X Control → ENTER button

2. Also install ActiveX to your personal computer. Net viewer is packaged with ActiveX.exe.

## LCD OSD



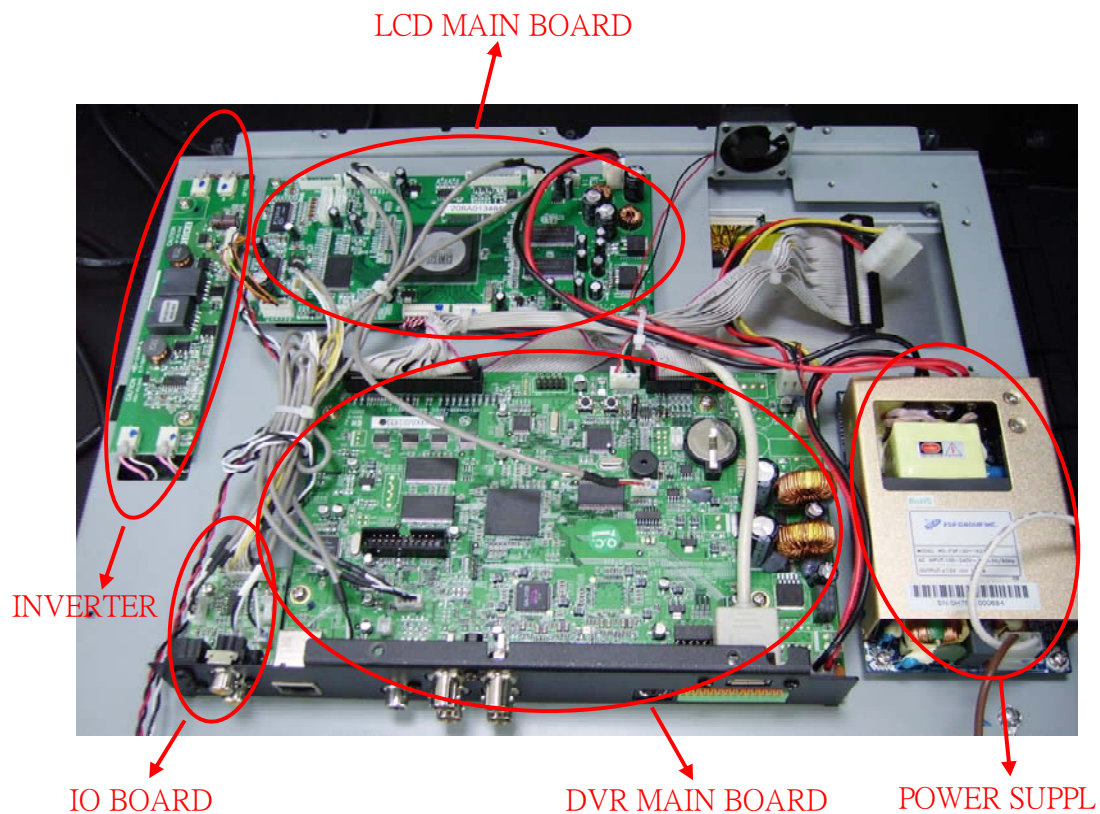
Brightness	LCD Screen brightness
Contrast	LCD Screen contrast
Saturation	LCD Screen saturation
Tint	LCD Screen tint
Sharpness	LCD Screen sharpness
Color Temperature	
H Position	Horizontal position
V Position	Vertical position

User please set up the monitor setting according to one's vision hobbit



## Trouble shooting:

### Hardware



1. After power on the system, if the FAN doesn't work or front panel LED light off, the root cause is POWER SUPPLY error.
2. The front panel LED light is normal and the voice adjustment is normal but the screen can not display, the root cause is INVERTER error.
3. After power on the system, suddenly the screen can not display, the root cause is INVERTER error.
4. After power on the system, LCD display error but Key board and other function are normal; the root cause is LCD MAIN BOARD error.
5. When Video output and Audio output are abnormal, the root cause is IO BOARD and LCD MAIN BOARD error.

Software:

1. After install the Hard Disk, the Hard Disk can't read, why?

The Hard Disk JUMPER setting error, please check the Hard Disk JUMPER, it should be setup with MASTER.

2. The CCD display with Black/White mode, why?

The root cause is system auto switch error, please check the channel 1, it should be connected with CCD. Then system will auto switch to NTSC or PAL system.

3. The Hard Disk format, what is the system password?

The system default password is 111111

4. Run playback function; can not display any video image, why?

Please check the channel 1; it should be connected with CCD.

5. The system time stop, can not counting, why?

The root cause is user enables the DDNS and the RJ45 cable was disconnected. Please check the network connects status.

6. Sometimes the system will be interfered with other remote controller, why?

Please turn on the LOCK function.